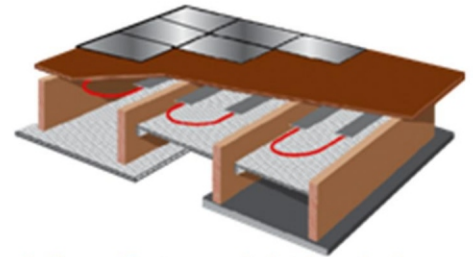


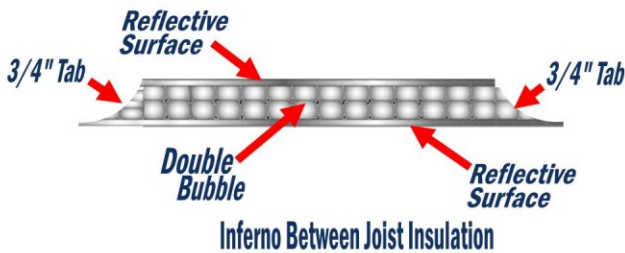
## Technical Data Sheet

### Description:

Inferno Between Joist Insulation is a double layer of polyethylene bubbles sandwiched between two reflective sheets with convenient staple tabs on each side for ease of installation and accuracy. The insulation is specifically designed for insulating residential wall and ceiling assemblies. Adding Inferno Insulation will greatly increase the buildings energy efficiency.



Inferno Between Joist Insulation Application



### Available Size:

Size	Roll
16"	125'
24"	125'
48"	125'

### Applications:

- Crawl Space
- Basement Insulation
- Residential Insulation
- Cathedral Ceiling
- Radiant Heating Between Joists

### Features:

- 97% Reflectivity for optimal thermal performance
- Unaffected by moisture and humidity
- Tab edge format allows for quick installation
- Radiant and Vapor barrier
- Double bubble provides an effective thermal break

Physical Property	Test Method	Inferno Between Joist Insulation
Nominal Thickness	—	5/16"
Weight	—	1.25 oz/sq.ft
Fire Rating	ASTM E84	Class 1/Class A
Temperature Range	ASTM C411	-50°F to 180°F
Thermal Resistance	ASTM C1224	R-15.2 (Heat Flow Down)
		R-8.5 (Horizontal Heat Flow)
Emissivity	ASTM C1371	0.03
Reflectivity	ASTM E 903	97%
Water Vapor Permeability	ASTM E96	<.02 Perms
Resistance to Fungi & Bacteria	ASTM C-1338	Does not Promote Growth